



Edmund Park Newsletter June 2021

June is supposed to be the best month for roses. Let's hope that the violent winds and rain of the last couple of weeks haven't damaged them too much. If you want to see roses in abundance go to Mottisfont, a National Trust house and garden. It's 45 miles away but well worth the journey as they have the national collection of pre-1900 old fashioned roses. The perfume in the garden is sublime.

The road map for lifting lockdown

Well the time has finally come and we're advancing slowly along the road to recovery. I don't know about you but I'm finding the return to what was "normal" almost as challenging as going into lockdown. We had our first meal out in a pub on Sunday and it seemed so strange. Plus it took ages to find something to wear that would accommodate the "lockdown surplus." But it is great news and let's hope that everyone who is able to has had their vaccinations and feels much happier about mixing. We just need the weather to buck up now.

Where am I?



A different way of looking at Frome.

Answer on last page

MONTHLY GARDENING TIPS

Spring? Really? May is usually such a gorgeous month when the garden really starts to grow and fill up with colour and height. So far I have some windblown plants, not much colour and some seedlings clinging on with their tiny roots.

So what to do this month? If you can face going outside (I can't) then not a great deal. It's too wet to mow, but when it does dry out give your lawn a mow, don't take too much off, little and often at this time of year will encourage it to thicken up. You can also feed it with fertilizer.

When the wind dies down it's time to harden off seedlings that are cluttering up your windowsills. This means putting them out for an hour the first day and so on until they are used to the change in temperature. We shouldn't get a frost now (famous last words) which would kill them off. So fingers crossed if we get some warmth they can grow on and planted out when they are big enough.

When the soil dries out a bit you can still lift and divide perennials to make more plants or share with your neighbours. And you can safely buy and plant new ones from the nursery, the ground is warm, and wet so they should take off really well. No doubt June will be as dry as anything and we will have to water.

If you have shrubs that have flowered such as Forsythia now is the time to tidy it up as it will flower next year on growth it puts on now.



Penstemon



Geranium



Grass

Perennials that I love because they grow well in our soil and are slug/snail proof are Penstemons, Geraniums, Geum, Verbena bonariensis, Gaura and grasses. Penstemons should be cut back to the new growth now. If you cut yours back earlier in the year they may have been killed by the frost. That's why it is important to leave last year's growth and not tidy up. It protects the plant and is good for wildlife, insects take shelter. I'll be giving you tips on how to propagate some of these perennials next month!

It's not too late to sow beans, peas, carrots, beetroot and lettuce.

And it is probably safe to buy and put out your bedding plants for a splash of instant colour. Feed and water your pots regularly throughout the season to prolong flowering.

Tulips and daffodils have gone over. Again resist the temptation to cut them back, the bulb draws the goodness from the foliage for next year's show. It's worthwhile giving them a feed now to help them along. If your daffodils didn't flower this spring it will be because they were not planted deeply enough. They need to be 3 times the height of the bulb. So if the bulb is 4 cm you need to plant it at least 12 cm. That's a bit of a slog in our soil.

Don't forget your house plants. Feed and water much more frequently, but don't let them sit in water.

And last but not least pray for sun!

Lynn

[Instagram](#)

[Pinterest](#)

+44 (0)7792 148275

Thanks Lynn. Don't forget if you're dividing your perennials that your neighbours and you could do a swap. It's better than consigning living plants to the bin or compost heap.

Frome Festival



After a disappointing cancellation last year Frome Festival is back on its feet and keen to celebrate its 20th Anniversary. Programmes are available around town but check out the website for the most up-to-date information in case there have to be last minute changes.
www.fromefestival.co.uk

Beware as well that the prices quoted for each event in the brochure may not be the price you pay. If you book through the Cheese and Grain or via the website you will be charged an extra £1.50 **per ticket** for events which cost over £5.

Staying on a gardening theme the ever popular Hidden Gardens is on over three days, 9th – 11th July. Tickets are £5 for all three days.

Bishop's Palace Garden Festival

Another welcome return is the Garden Festival at the Bishop's Palace, Wells. Nurseries, food and drink, garden gadgets, live music, talks and much more will be available. Tickets are available on the palace website and are £12.50 per adult and £6.50 per child.

<https://bishoppalace.org.uk/whats-on/garden-festival-2021/>

Frome Cheese Show

Yet another popular event that was cancelled last year is planning to go ahead at the West Woodlands Showground on Saturday 11th September. Frome Cheese Show has taken place for the past 150 years and this year will be an opportunity to have a fun day out and to support local businesses. Tickets are only available on the wwebsite;

<https://fromecheeseshow.ticketsrv.co.uk/tickets/>

Throw another bit of chicken on the barbie....



How about these easy traffic light chicken kebabs to start the BBQ season off with a colourful dish?

They're big on flavour but the spice is toned down so they're great for kids. If you're veggie then leave the chicken out and add onions and/or mushrooms in its place.

Ingredients

6 chicken breasts or thighs chopped into large chunks

2 each red, yellow and green peppers, deseeded and chopped into chunks

For the marinade

2 garlic cloves finely grated

300g natural or Greek yogurt

1 tbsp paprika

3 tbsps tomato ketchup

Method

Mix the marinade ingredients in a large bowl. Set aside one third of this into a smaller bowl, cover and refrigerate. Stir the chicken into the remaining marinade and set aside for at least 20 minutes.

Thread the chicken and peppers on to skewers. If using wooden ones make sure you soak them in cold water for an hour beforehand.

Put on the BBQ and cook, turning as necessary until the chicken is thoroughly cooked through.

Serve with warm flatbreads, the reserved yogurt sauce and tomato and lemon wedges on the side.

Portrayal of a pandemic

If you haven't had enough of Covid there's an exhibition being staged in September, for which entries are being taken now. All forms of art are welcome including paintings, photography, mixed media, textiles, sculpture and poems. There are 3 age categories: under 12s, under 18s and adults. The exhibition is part of the 10th anniversary celebrations for the Active and In Touch charity which helps to combat isolation and loneliness. They are asking people to share their experiences, joyful or sad and 30 of the best submissions will go to a public vote for 12 images to be published in the 2022 calendar. Entry is free and work should be submitted by emailing a jpeg photograph to events@activeandintouch.org no later than Friday 4th June.

Site News

Liaison for Site Maintenance Issues

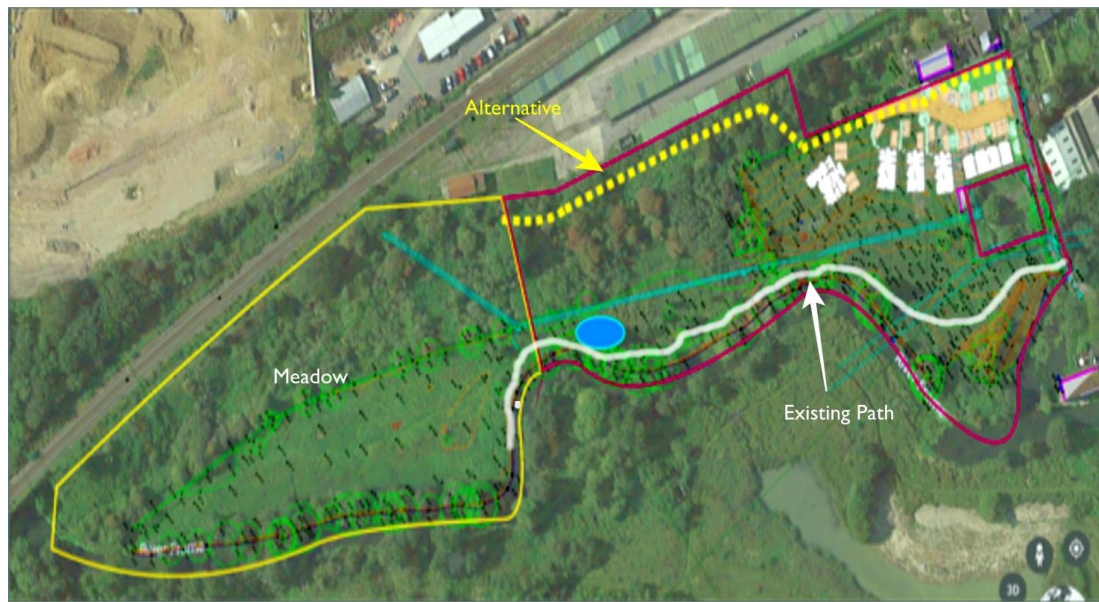
To clarify who we should liaise with, I wrote to Gary Mallet, the Southern Regional Manager of Remus asking: As the homeowners won't be running the Management Company until all 3 Phases have been handed over to Remus, should we liaise directly with you (ie Remus) if we have any maintenance questions as you take on each Phase, or should we liaise with Persimmon.

Gary Mallett replied to say: As we take on each phase, maintenance issues can come to us provided they relate to the areas we are maintaining. Maintenance or defect issues relating to people's houses and non-managed areas would need to go to the Developer. If an issue with a managed area needs referring to the Developer, Remus will then do this.

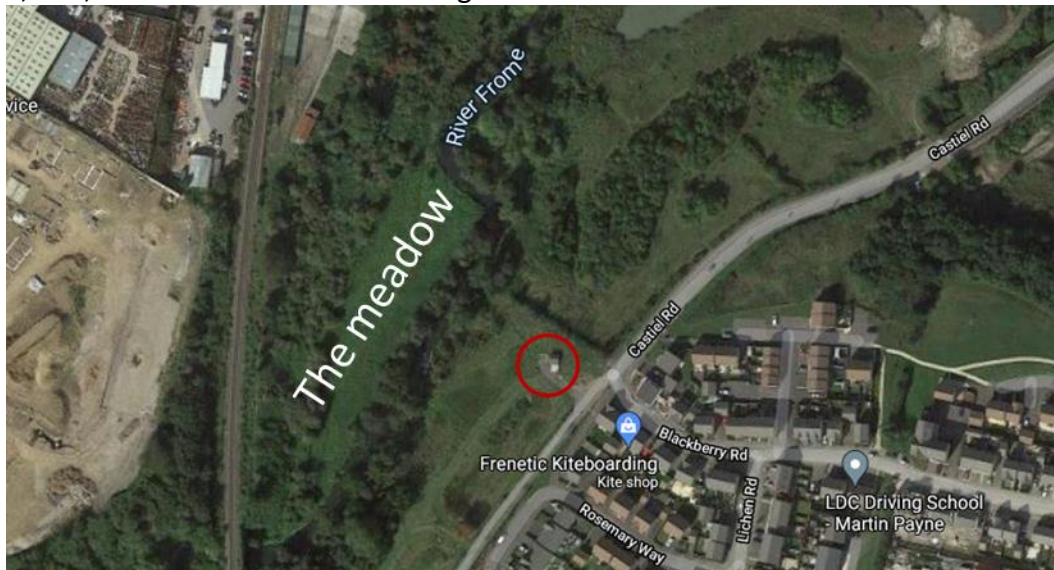
On the other side of the river

(I include this as it has an influence on the next item – Adderwell Bridge.)

You may be aware of the big issue revolving around the acquisition of land at The Retreat and the footpath leading there, alongside the river (on the opposite side to us). A week ago, we had an email from Simon Keyes, Secretary of Friends of the River Frome, telling us that the landowners of the site off the Retreat wish to re-route the existing footpath away from part of their proposed development, in return for which Frome Town Council would be able to acquire the meadow at the Adderwell end as a new public riverside space. This was illustrated as follows



.... and it is difficult to get this into perspective. Using the next picture, if you walk to the electricity sub-station (red circle), at the entry to our estate, and look straight across the river, you'll be looking at the meadow. You can immediately see how an elevated bridge could so easily take you close to the Adderwell development and the station, etc., so let's move on to the bridge



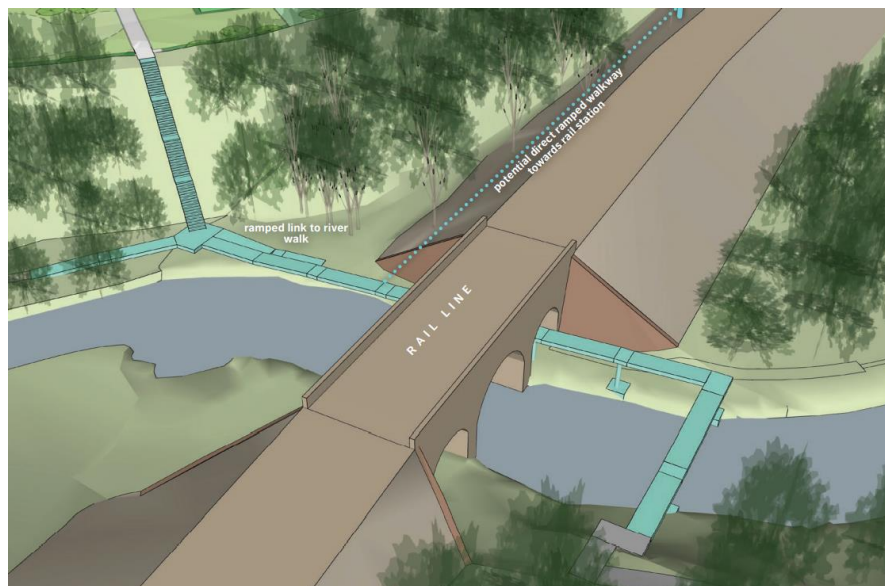
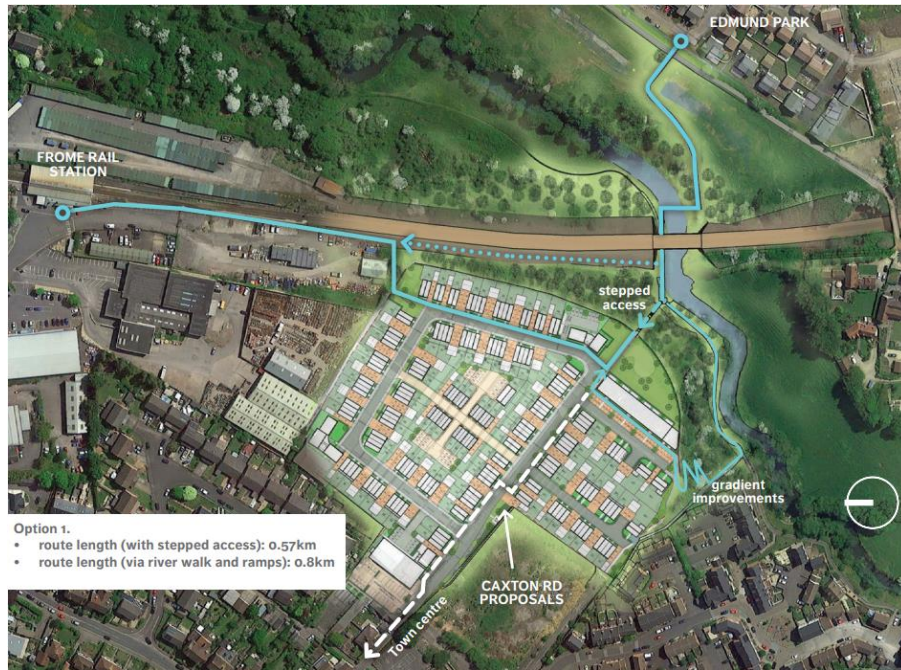
Adderwell Bridge

Back in January 2020 the following was in the Newsletter:

Bridge over the River Frome

Hopefully you will all have received the draft document about this that I sent out at the beginning of December. If you haven't and you'd like a copy please get in touch at edmund.park.frome@outlook.com. 3 options for a pedestrian river crossing have been proposed.

As a reminder, courtesy of Friends of the River Frome (FORF), the following 2 pictures show one option:



Today (25th), thanks to one of our residents, Simon Carter, we had a meeting on-site with representatives from Frome Town Council, FORF and Roundfield (Architects) to talk about the status of the project and ways forward.

One of the main issues is the very steep gradient from our estate down to the river and the advantages of, and need, for easy access and egress. Further to a study of the extent of river flooding, the bridge is required to be just over 2 metres above the normal water level. So an elevated bridge is required and recent designs have suggested options, such as the following, to emphasise this:



There is still a lot to consider and the previous entry 'On the other side of the river' has added another option which could result in a complete re-siting of the bridge. It's genuinely a 'watch this space' situation.

Our Travel Plan

One item that has fallen by the wayside is our estate Travel Plan – due to simply being forgotten and then due to Covid. It's not an easy item to get to grips with but, if you fancy a challenge, there's a copy on the www.edmundparkfrome.com website. Bear with me as I give a little bit of info from the Plan but it should help to make sense of the email update that follows.

The main objectives of the Travel Plan are to:

- Encourage sustainable travel modes for travel to/from the site;
- Enable access to a full range of facilities for work, health, leisure, recreation and shopping; and
- Promote healthy lifestyles for the residents of the development.

The Travel Plan, Section 8, gives the following summary of what it's about

- The provision of a Welcome pack for each household;
- Pedestrian/cycle link onto the existing ASDA Spine Road pedestrian/cycle link;
- The provision of part of the NCN24 missing link within the boundary of the site;
- The provision of suitable car, cycle and motorcycle parking;
- Provision of bus boarders, timetables and appropriate bus shelters will be provided at the existing bus shelters on A362 outside of the ASDA store;
- The provision of a bus stop including bus shelter, timetable display and bus borders within the site;
- The provision of a Travel Plan website and two notice boards;
- Travel Plan vouchers for each dwelling for one tenure

- A permanent ATC located at the site entrance; (ATC = Automatic Traffic Counter)
- The funding of the TPC;
- A sustainable design of the site, in accordance with the Manual for Streets, which places walking and cycling at the top of the transport hierarchy.
- A comprehensive monitoring programme has been drawn up to ensure the success of the Travel Plan. Action Plan
- A Travel Plan Safeguard Sum of £112,500.

There are two main players. One is Somerset County Council, within which Rebecca Davis is the Principal Travel Plan Officer (TPO). Rebecca is responsible for making sure the Travel Plan is implemented. The other is James Duffy, an Associate Transport Planner, who is employed by Jubb – the company who wrote the Travel Plan. James is the Travel Plan Coordinator (TPC).

I wrote to Ms Davis in December of last year but had only an autoreply. I wrote again on 3rd May, saying

To date I'm aware of no response to my email other than an autoreply. I've also been unable to get any response from Persimmon or from Jubb (the TPC). Persimmon are preparing to hand over Phase 1 of the estate (estimated as mid-June) so it's becoming even more urgent to have some information on the plan for the Travel Plan. Please can you help us?

.... and received the following on 26th May:

Thank you for your email, I apologise that you have not had a response sooner. By way of explanation the Travel Plan Team were redeployed to assist with Covid19 work and as a result we were not in a position to be able to respond. I can advise that I have been in contact with the Travel Plan Coordinator (Jubb) for Edmund Park and they have confirmed that they will send you an update regarding the progression of the Travel Plan in due course.

I trust this is of assistance, however, please do not hesitate to get back in touch with us if you have not heard from the Travel Plan Coordinator over the next few weeks.

.... and to my surprise, I also received the following from James Duffy:

Apologies for my late reply as you are no doubt aware the Travel Plan for the above is a long term project but the introduction of a pandemic has caused some delay. As by way of an update I have spoken with Persimmon and they have confirmed that they will be installing travel notice boards soon which will be introduced by the play equipment contractor. I will keep you updated on the other measures as these progress. I have also spoken to Rebecca Davies at Somerset County Council in relation to the travel monitoring surveys. Rebecca has confirmed that September would be a more appropriate time for these (i.e. to allow restrictions to be lifted and travel patterns to bed down). I will keep you updated if there are any changes to this.

Let's hope things are finally on the move – fingers crossed!!

PERSIMMON CUSTOMER CARE

Apologies for the mistake last month. For those of you who have asked the Customer Care link is: amanda.pearce@persimmonhomes.com

Where was I?



Cork Street – the street that leads to the cinema. There is a plaque above the door between Jack's, the hairdresser's and Lewis Gray, estate agents, which commemorates the stay of the Duke of Monmouth, 28th – 30th June 1685

Email: edmund.park.frome@outlook.com

Website: www.edmundparkfrome.com

Deadline for July's issue: 20th June 2021